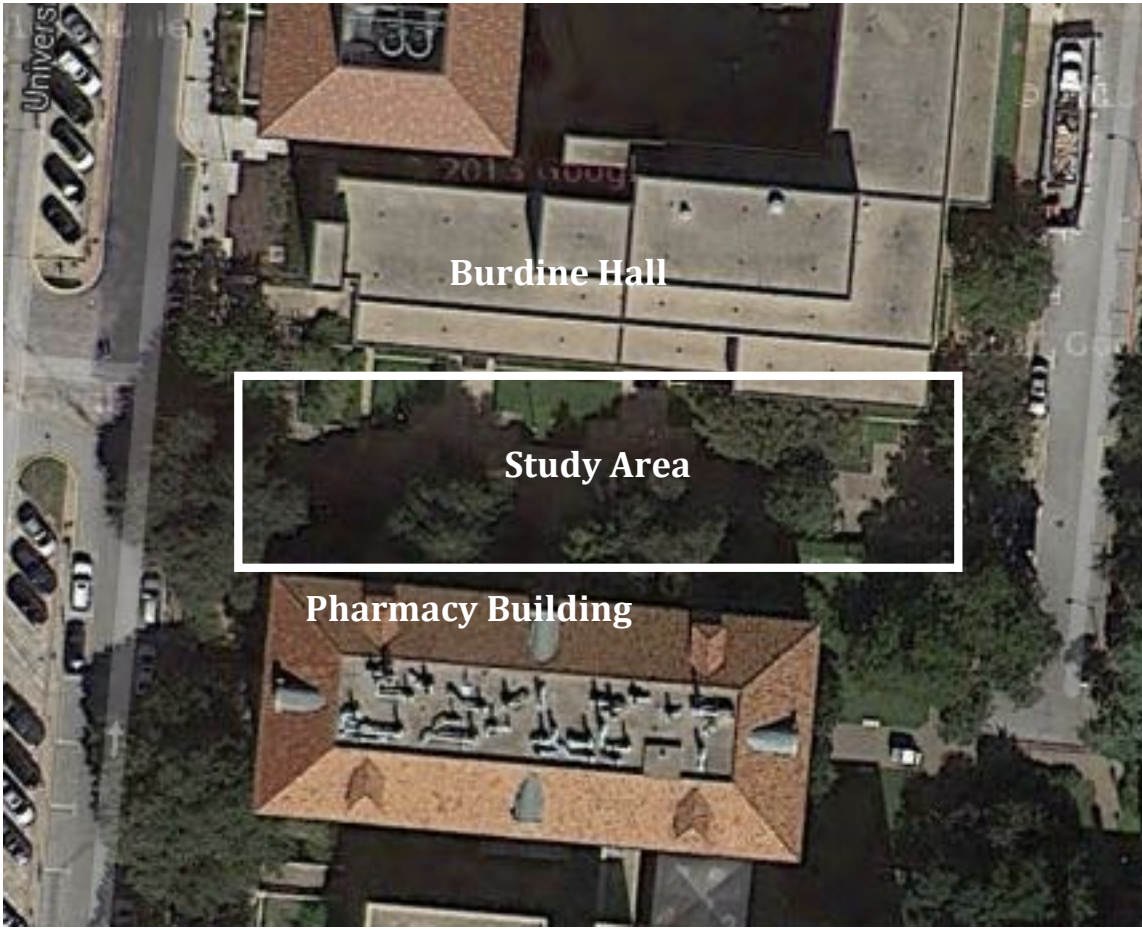


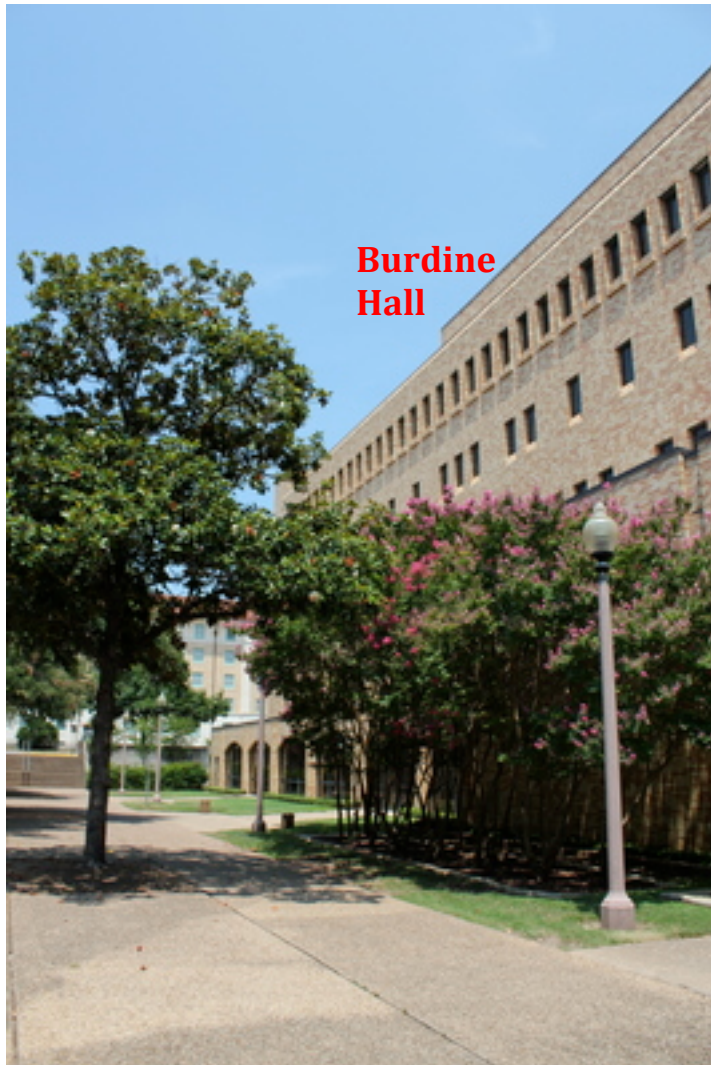
Abby Stout
Alexis Sheehan
Phillip Kenny

CE 365K Group 10 Project Progress Report

Basemap:



Close-up of study area:



Summary of Proposed Plan:

For our project we are studying the area on the UT campus between Burdine Hall and the Pharmacy buildings, shown in the basemap picture above. The drainage in this area is poor and susceptible to flooding. To improve stormwater flow in this area we are proposing a combination of Low Impact Development (LID) methods. We will design a small rain garden in the area to retain excess flow, which will also add and aesthetic benefit to the area. We also plan to implement porous pavement in the area so that water can be absorbed into the existing soil, effectively reducing the large amounts of impervious cover in and around the buildings. Finally, we will incorporate native shrubbery and vegetation, like cacti, which don't need a lot of maintenance, and can capture stormwater flow.