

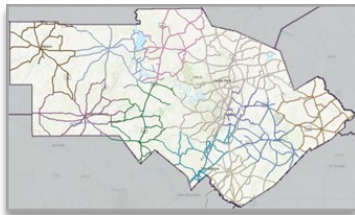
# Streamflow II Project 0-7095

University of Texas at Austin, Center for Water & the Environment,  
US Geological Survey, and KISTERS

January 2023

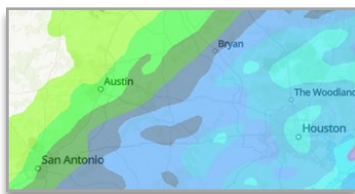


The **Flood Assessment System for TxDOT** (FAST) contains an overlaid set of real-time web maps describing the road and bridge asset inventory, precipitation, streamflow measurement, inundation mapping, bridge warnings, and flooded roads within the TxDOT system



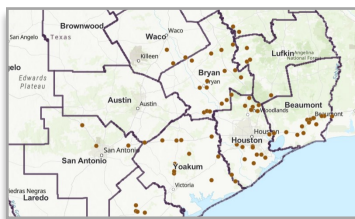
## Asset Inventory

A summary of flooded routes, bridges and culverts by Maintenance Section



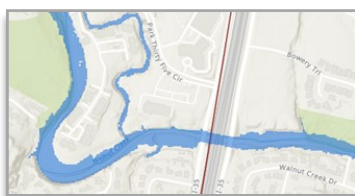
## Precipitation

Forecasts of future precipitation and estimates of past precipitation



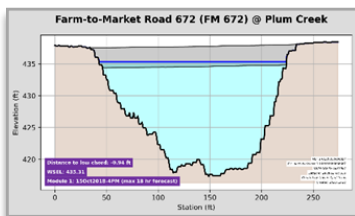
## Streamflow Measurement

Measurement of water surface elevation, velocity and discharge using radar gauges on TxDOT Bridges



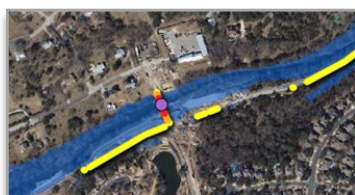
## Inundation Mapping

Extent of flood inundation arising from forecasts of flood discharge and water surface elevation



## Bridge Warning

Water surface elevation at a bridge and distance from the low chord of the bridge



## Flooded Roads

Extent and depth of inundation on roads